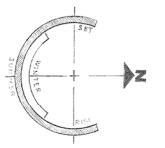


NOTE: CONSTRUCTION LIMITS
 CONSTRUCTION SITE LIMITS ARE THE LIMITS OF CONTOUR 560.00. CONTRACTOR TO ESTABLISH CONSTRUCTION OFFSETS, BRIDGE CHAINS AND CONSTRUCTION TIEBACKS WITHIN THESE LIMITS. LAYOUT AND LOCATION OF THESE ITEMS MUST BE APPROVED BY ARCHITECT.

- LEGEND**
- ① Commonwealth of Kentucky Concrete Monument with Plate
 - ② Bench Mark Elev. 527.30 Plate in Concrete Monument
 - Grid & Magnetic Bearing related only to this site plan
 - Utilities not on site. Nearest water, gas & electricity on University Drive (campus) and East of maintenance building. Ft. Thomas Water Company, Union Light, Heat & Power.
 - EXISTING CONTOUR
 - - - - - FINISH CONTOUR
 - ① MARK IS TO REMOVE STRUCTURES AS PER GENERAL CONTRACTOR IS TO REMOVE REMAINING FOUNDATIONS AND SLABS.

SITE PLAN FOR PROPOSED HOUSING
 NORTHERN KENTUCKY UNIVERSITY

SCALE 1/4"=80'
 CONTOUR INTERVAL 2'

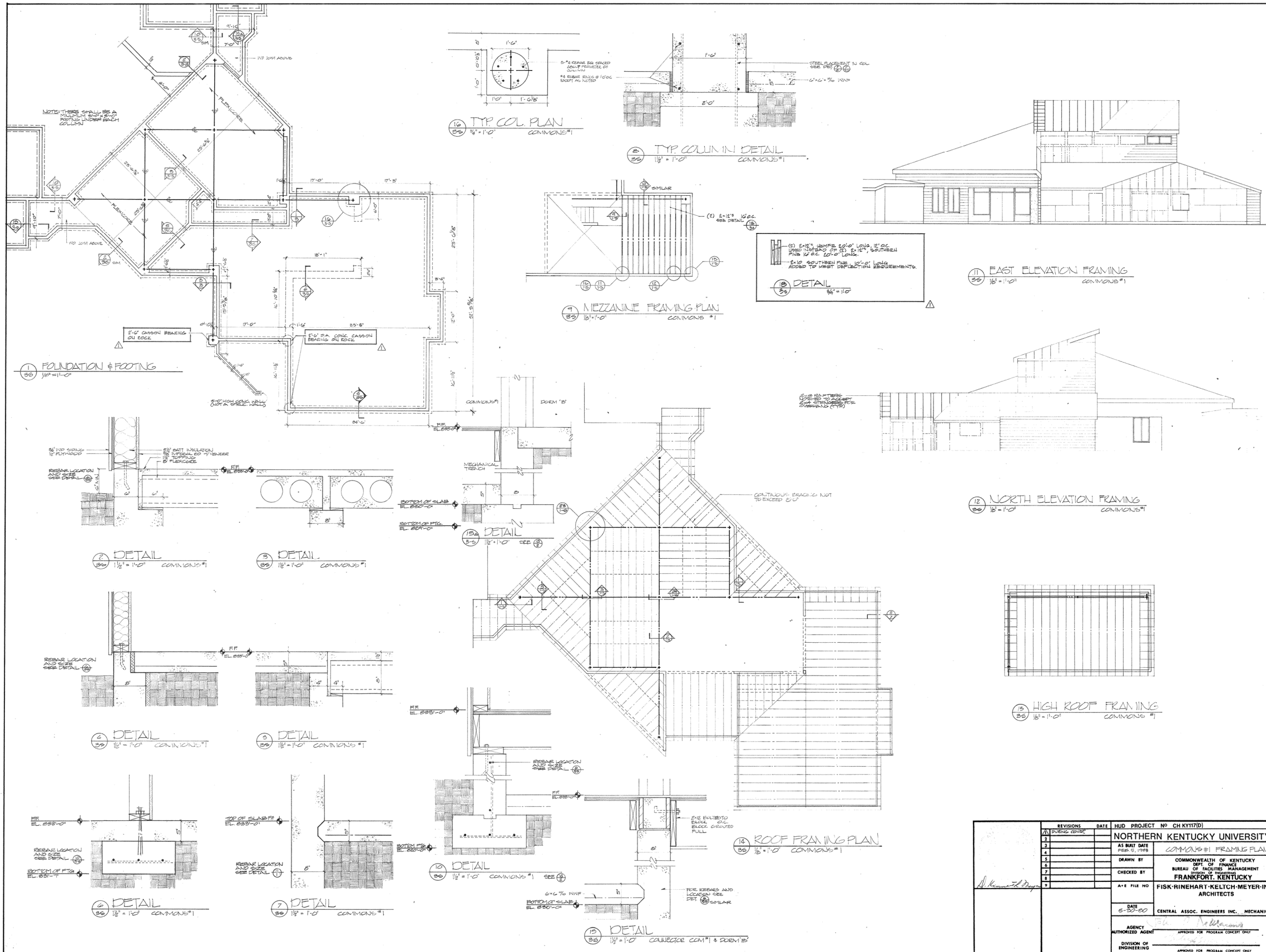


REVISIONS	DATE	HUD PROJECT NO. CH KY1171D
1		
2		
3		
4		
5		
6		
7		
8		

NORTHERN KENTUCKY UNIVERSITY HOUSING		DRAWING NO.
AS BUILT DATE	DATE	SD
DRAWN BY		REVIEWED
COMMONWEALTH OF KENTUCKY		DATE
DEPT. OF FINANCE		ENGR. FILE NO.
BUREAU OF FACILITIES MANAGEMENT		
FRANKFORT, KENTUCKY		
CHECKED BY	A+E FILE NO.	
FISK-RINEHART-KELTCH-MEYER-INC.		
ARCHITECTS		
DATE	CENTRAL ASSOC. ENGINEERS INC. MECHANICAL	
5-20-80		
AGENCY AUTHORIZED AGENT	APPROVED FOR PROGRAM CONCEPT ONLY	DATE
DIVISION OF ENGINEERING	APPROVED FOR PROGRAM CONCEPT ONLY	2-23-80

STATE OF KENTUCKY
 GEORGE E. SHIMMEL
 1027
 REGISTERED LAND SURVEYOR

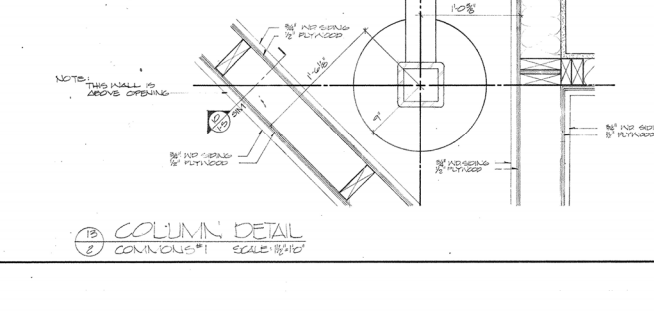
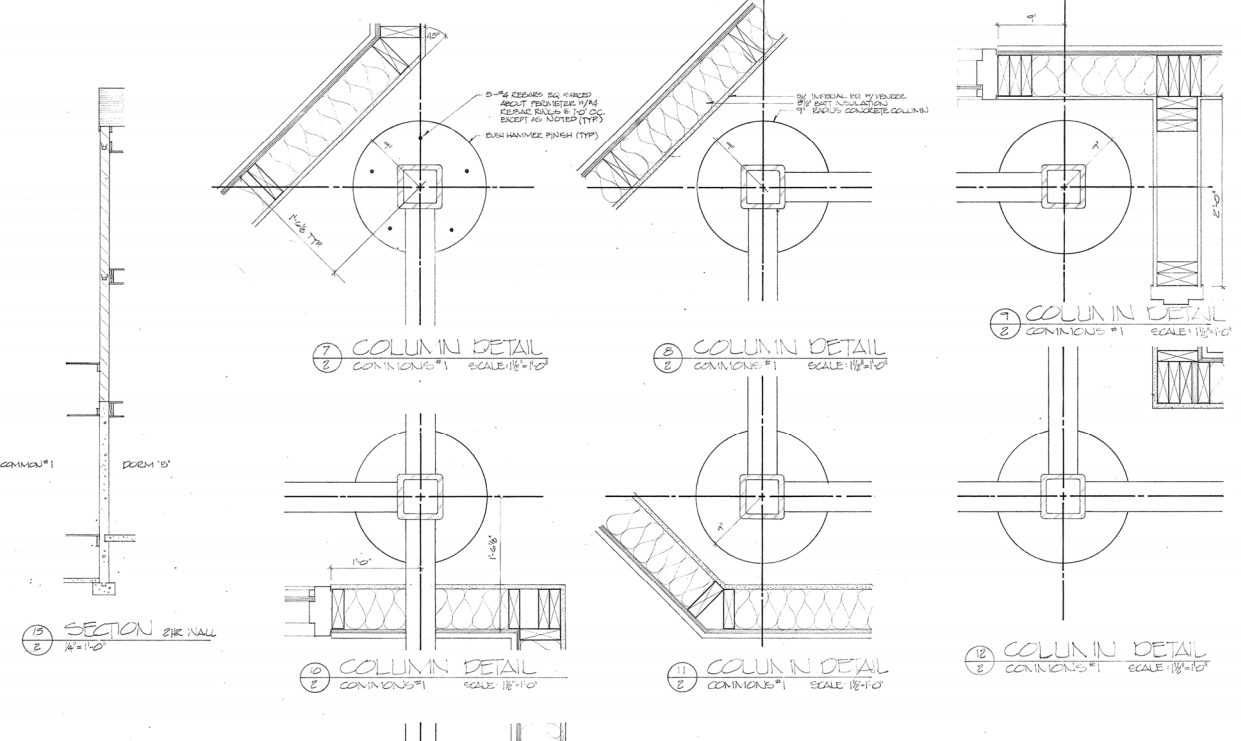
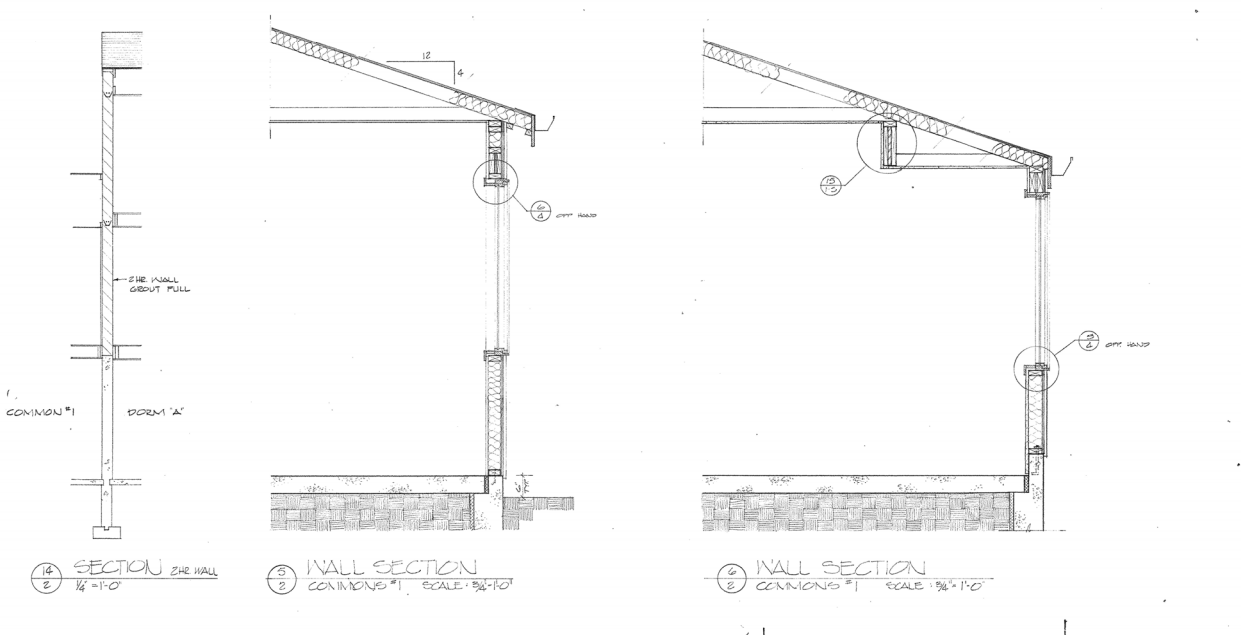
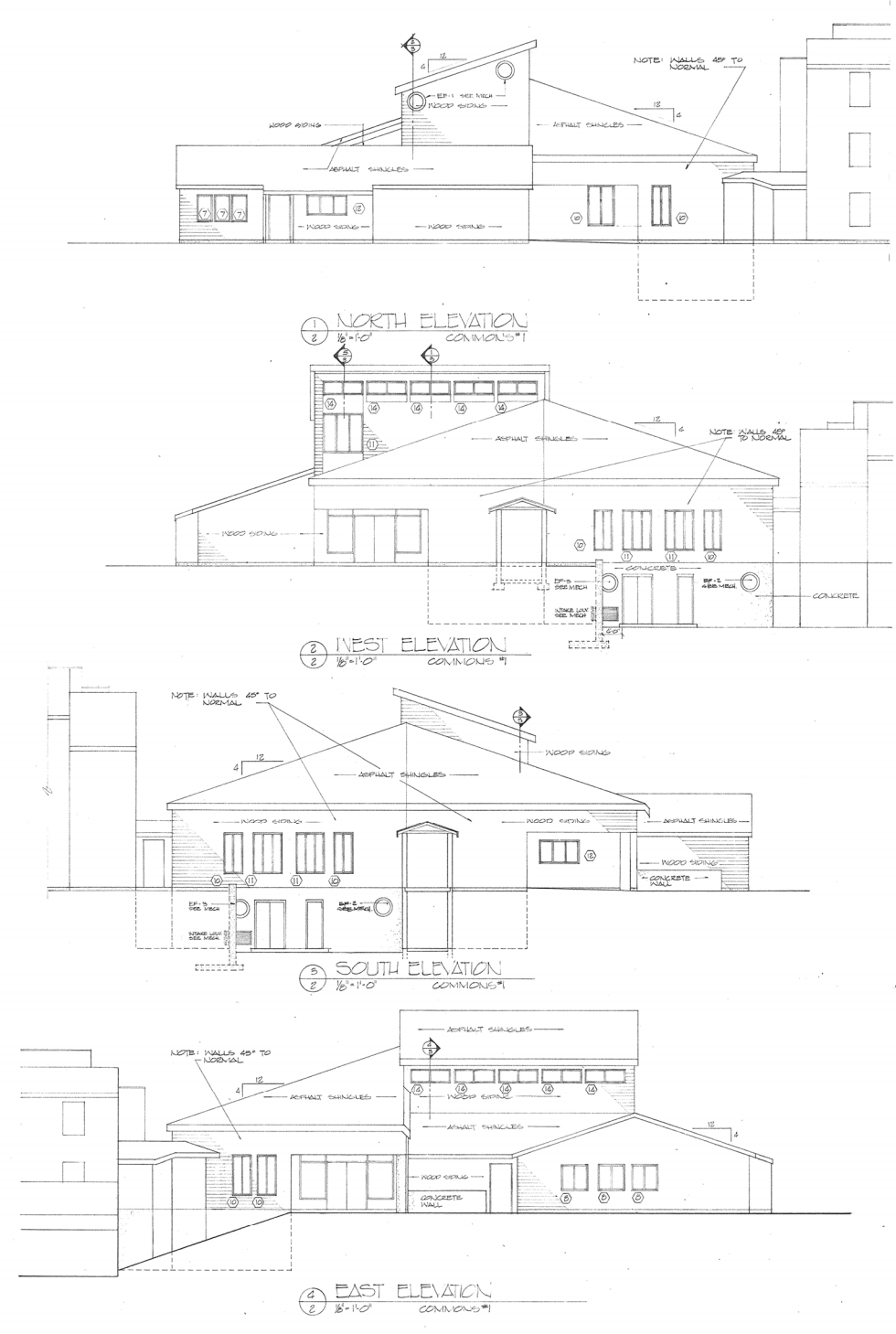
DRAWINGS PROVIDED FOR REFERENT ONLY



REVISIONS	DATE	BY	PROJECT NO. CH KY117(D)	DRAWING NO.
1	5-15-80	DRIVING CENTER	NORTHERN KENTUCKY UNIVERSITY HOUSING	3S
2			COMMONS #1 FRAMING PLANS	
3				
4				
5				
6				
7				
8				
9				

AS BUILT DATE	COMMONS #1 FRAMING PLANS	DRAWING NO.
APR 5, 1989		3S
DRAWN BY	COMMONWEALTH OF KENTUCKY DEPT. OF FINANCE BUREAU OF FACILITIES MANAGEMENT FRANKFORT, KENTUCKY	REVIEWED DIV. OF ENGR. FOR HOME OFF. ENGR. FILE NO.
CHECKED BY		
A & E FILE NO.	FISK RINEHART-KELTCH-MEYER-INC. ARCHITECTS	
DATE	5-22-80	
	CENTRAL ASSOC. ENGINEERS INC. MECHANICAL	
AGENCY AUTHORIZED AGENT	APPROVED FOR PROGRAM CONCEPT ONLY	DATE
DIVISION OF ENGINEERING	APPROVED FOR PROGRAM CONCEPT ONLY	DATE 2-23-80

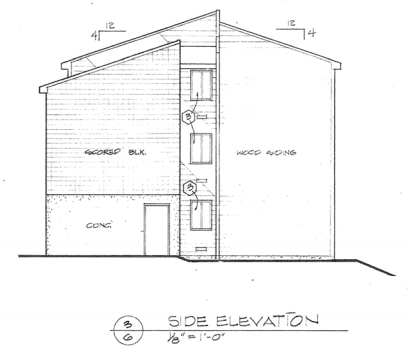
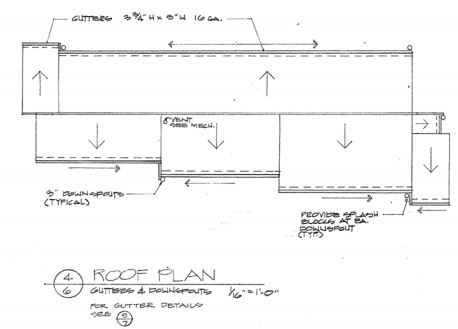
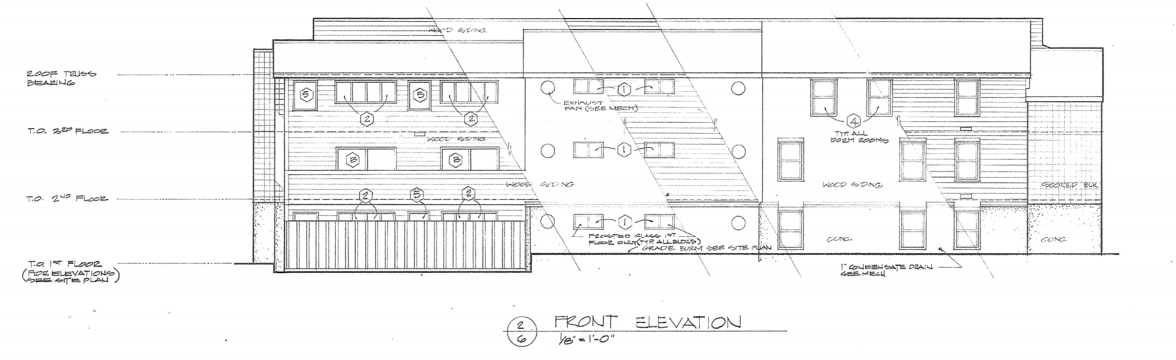
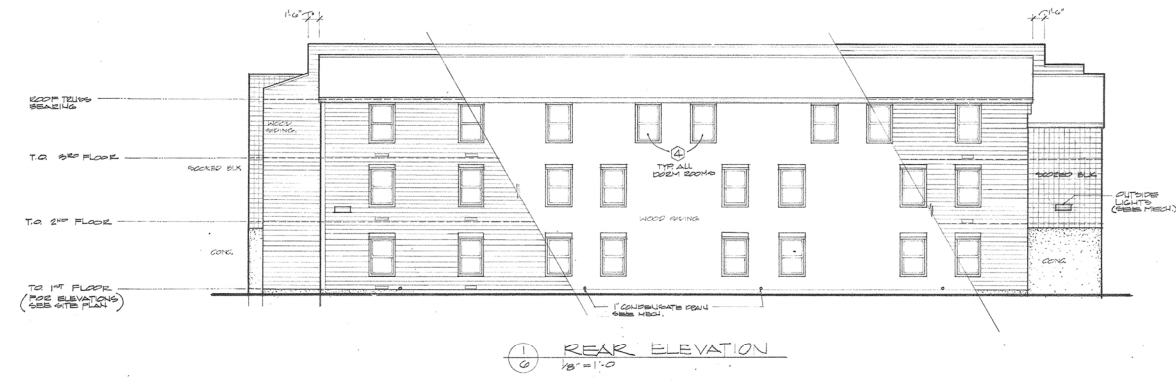
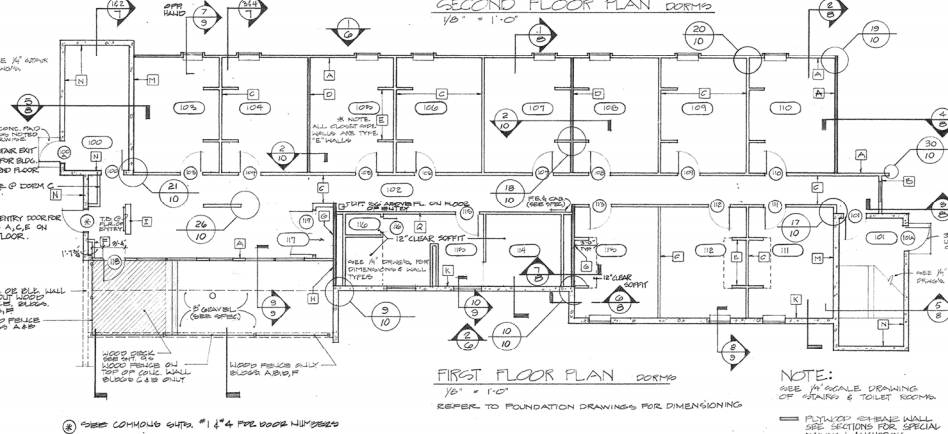
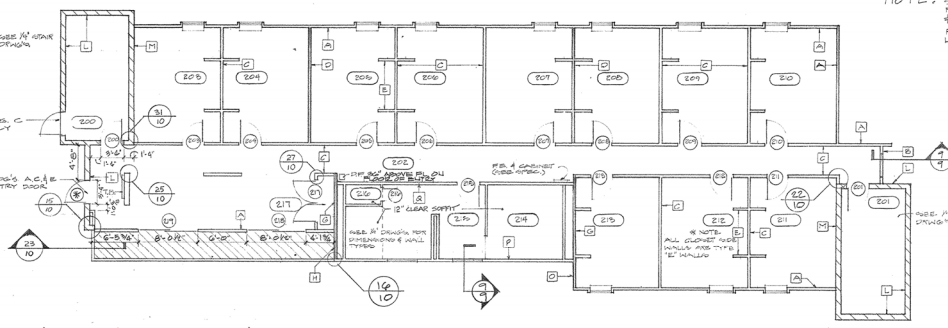
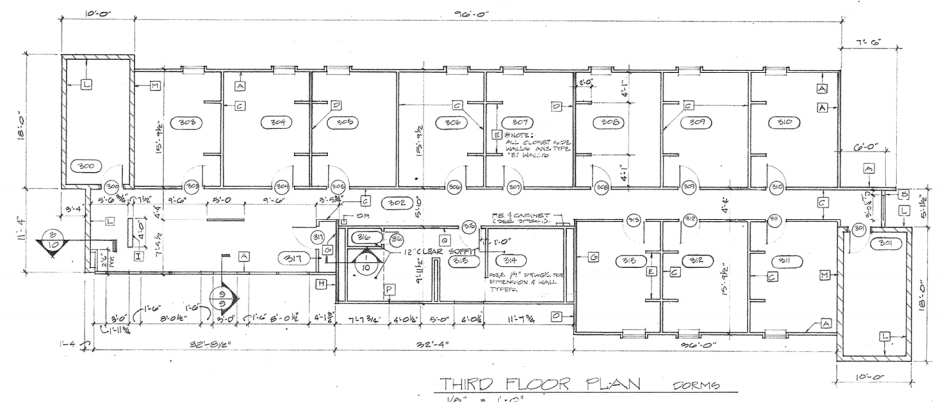
7-1899



REVISIONS	DATE	BY	DESCRIPTION
1			
2			
3			
4			
5			
6			
7			
8			
9			

HUD PROJECT NO. CH KY117(D) NORTHERN KENTUCKY UNIVERSITY HOUSING		DRAWING NO.
AS BUILT DATE	COMMON #1 ELEV-COL DETAILS	2
DATE	COMMONWEALTH OF KENTUCKY BUREAU OF FACILITIES MANAGEMENT OFFICE OF FINANCE FRANKFORT, KENTUCKY	
A/E FILE NO.	FISK-RINEHART-KELTCH-MEYER-INC. ARCHITECTS	REVIEWED DATE OF ENGR. ONE FOR ARCH. ONLY ENGR. FILE NO.
DATE	CENTRAL ASSOC. ENGINEERS INC. MECHANICAL	
AUTHORIZED AGENT	APPROVED FOR PROGRAM CONCEPT ONLY	DATE
DIVISION OF ENGINEERING	APPROVED FOR PROGRAM CONCEPT ONLY	DATE 2-27-82

I-1099



TYPICAL DORM ROOM FINISH SCHEDULE (SCHEDULE APPLIES TO ALL 6 DORMS A THRU E)

ROOM NO.	DESCRIPTION	FLOORING	WALLS	CEILING	FINISH	REMARKS	ROOM NO.	DESCRIPTION	FLOORING	WALLS	CEILING	FINISH	REMARKS
200	HALL	CONC.	CONC.	CONC.	---	---	209	HALL	CONC.	CONC.	CONC.	---	---
201	HALL	CONC.	CONC.	CONC.	---	---	210	HALL	CONC.	CONC.	CONC.	---	---
202	CORRIDOR	CARPET	VEN. PLAST.	PAINT	VEN. PLAST.	PAINT	211	HALL	CONC.	CONC.	CONC.	---	---
203	BED ROOM	---	---	---	---	---	212	HALL	CONC.	CONC.	CONC.	---	---
204	---	---	---	---	---	---	213	HALL	CONC.	CONC.	CONC.	---	---
205	---	---	---	---	---	---	214	HALL	CONC.	CONC.	CONC.	---	---
206	---	---	---	---	---	---	215	HALL	CONC.	CONC.	CONC.	---	---
207	---	---	---	---	---	---	216	HALL	CONC.	CONC.	CONC.	---	---
208	---	---	---	---	---	---	217	HALL	CONC.	CONC.	CONC.	---	---
209	---	---	---	---	---	---	218	HALL	CONC.	CONC.	CONC.	---	---
210	---	---	---	---	---	---	219	HALL	CONC.	CONC.	CONC.	---	---
211	---	---	---	---	---	---	220	HALL	CONC.	CONC.	CONC.	---	---
212	---	---	---	---	---	---	221	HALL	CONC.	CONC.	CONC.	---	---
213	---	---	---	---	---	---	222	HALL	CONC.	CONC.	CONC.	---	---
214	---	---	---	---	---	---	223	HALL	CONC.	CONC.	CONC.	---	---
215	---	---	---	---	---	---	224	HALL	CONC.	CONC.	CONC.	---	---
216	---	---	---	---	---	---	225	HALL	CONC.	CONC.	CONC.	---	---
217	---	---	---	---	---	---	226	HALL	CONC.	CONC.	CONC.	---	---
218	---	---	---	---	---	---	227	HALL	CONC.	CONC.	CONC.	---	---
219	---	---	---	---	---	---	228	HALL	CONC.	CONC.	CONC.	---	---
220	---	---	---	---	---	---	229	HALL	CONC.	CONC.	CONC.	---	---
221	---	---	---	---	---	---	230	HALL	CONC.	CONC.	CONC.	---	---
222	---	---	---	---	---	---	231	HALL	CONC.	CONC.	CONC.	---	---
223	---	---	---	---	---	---	232	HALL	CONC.	CONC.	CONC.	---	---
224	---	---	---	---	---	---	233	HALL	CONC.	CONC.	CONC.	---	---
225	---	---	---	---	---	---	234	HALL	CONC.	CONC.	CONC.	---	---
226	---	---	---	---	---	---	235	HALL	CONC.	CONC.	CONC.	---	---
227	---	---	---	---	---	---	236	HALL	CONC.	CONC.	CONC.	---	---
228	---	---	---	---	---	---	237	HALL	CONC.	CONC.	CONC.	---	---
229	---	---	---	---	---	---	238	HALL	CONC.	CONC.	CONC.	---	---
230	---	---	---	---	---	---	239	HALL	CONC.	CONC.	CONC.	---	---
231	---	---	---	---	---	---	240	HALL	CONC.	CONC.	CONC.	---	---

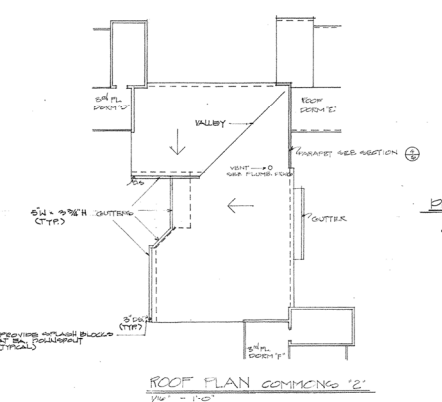
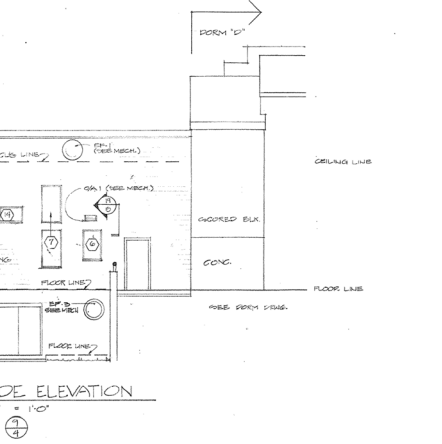
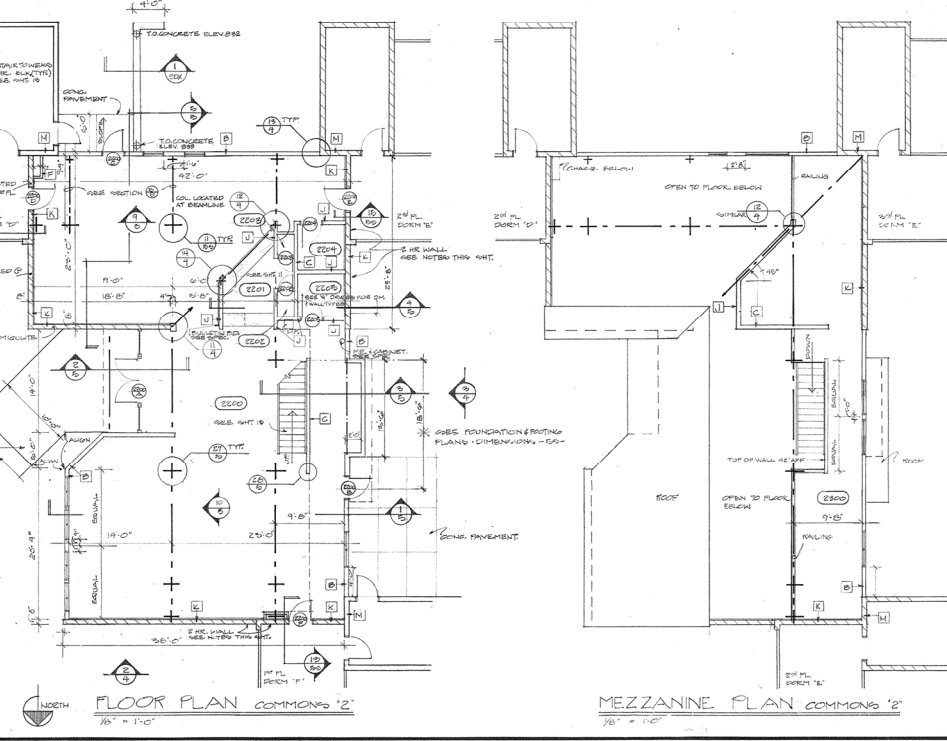
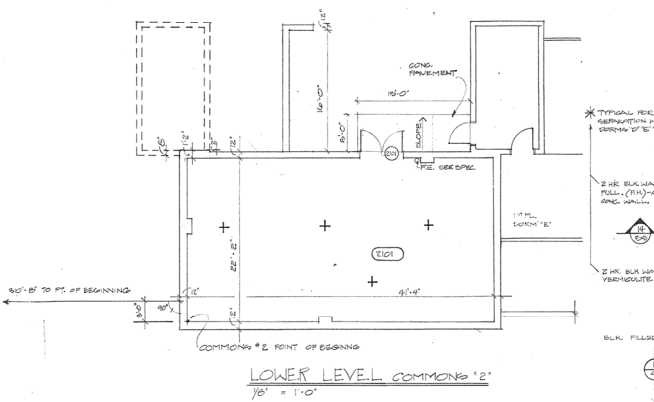
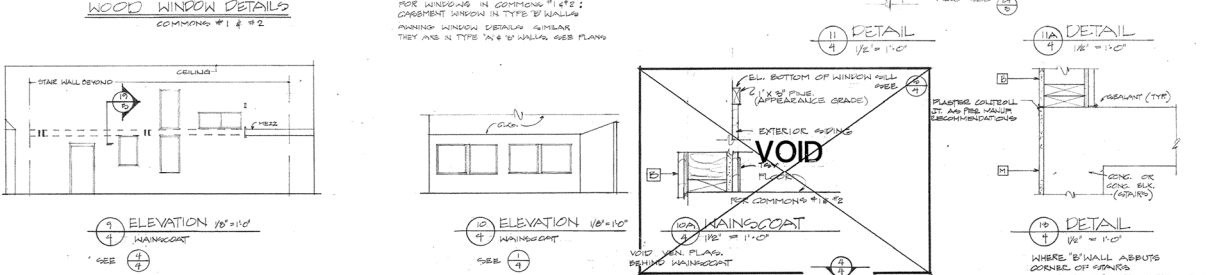
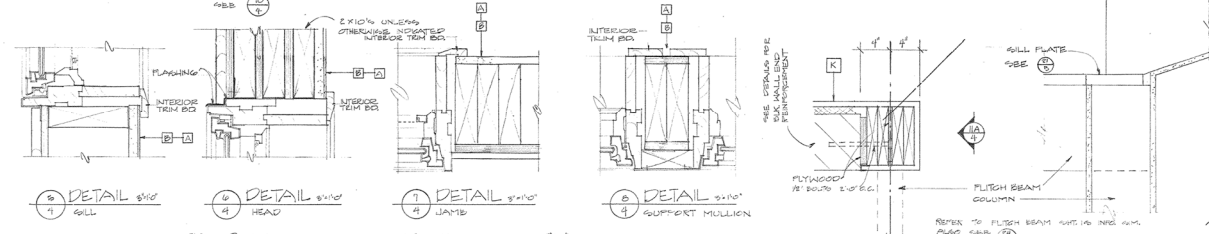
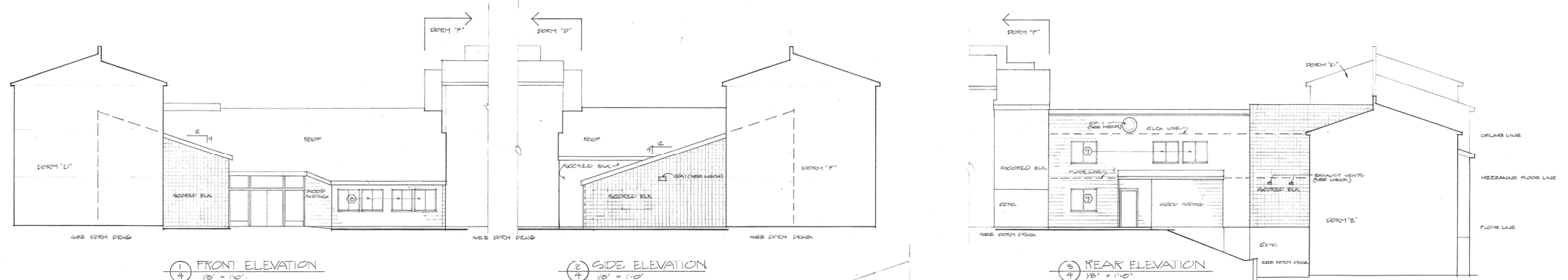
NOTES: 1. DORMITORY DRAWINGS ARE TYPICAL FOR ALL SIX DORMITORY BUILDINGS WITH DORMS A1-D BEING OPPOSITE HAND. SEE SITE PLAN FOR ELEVATIONS.
2. ALL DIMENSIONS FROM FACE OF STD. CENTER LINE OF STD OR FACE OF CONC. OR CONC. BLK.

DESIGN LIVE LOADS:
DORMS - 50 PSF
HALLS - 100 PSF
CORRIDORS - 100 PSF
PUBLIC ROOMS - 100 PSF
CORRIDORS - 50 PSF

REVISIONS	DATE	BY	DESCRIPTION
1			
2			
3			
4			
5			
6			
7			
8			

HUD PROJECT NO. CH KY117(D)
NORTHERN KENTUCKY UNIVERSITY HOUSING
DORMS - PLANS, ELEVATIONS
DRAWING NO. **6**
DRAWN BY: COMMONWEALTH OF KENTUCKY, DEPT. OF FINANCE, BUREAU OF FACILITIES MANAGEMENT, FRANKFORT, KENTUCKY
CHECKED BY: FISK-RINEHART-KELTCH-MEYER-INC., ARCHITECTS
DATE: 5-30-80
CENTRAL ASSOC. ENGINEERS INC. MECHANICAL
AGENCY AUTHORIZED AGENT: APPROVED FOR PROGRAM CONCEPT ONLY
DIVISION OF ENGINEERING: APPROVED FOR PROGRAM CONCEPT ONLY

F-1103



DESIGN LIVE LOADS:

200#	20 PLF
100#	100 PLF
40#	40 PLF
150#	150 PLF
80#	80 PLF

COMMONS 2-ROOM FINISH SCHEDULE

ROOM NO.	DESCRIPTION	FLOORING	WALLS	CEILING	FINISH	W.C.	REMARKS
E201	MECH RM	CONC.	CONC.	(PLASTER)	-	0'-0"	
E202	COMMON LOUNGE	CONC.	VEN. PLASTER	PAINT	VEN. PLAS.	PAINT	USE HANDICAP DETAILS
E203	DIRTY CONTROL AREA	-	-	-	-	0'-0"	
E204	CLON	-	-	-	-	0'-0"	
E205	CLON	-	-	-	-	0'-0"	
E206	WOMEN'S TOILET	POZE TILE	-	-	-	0'-0"	
E207	MEN'S TOILET	-	-	-	-	0'-0"	
E208	MEZZANINE	GRANT	VEN. PLAS./CONC. B.L.C.	PAINT	VEN. PLAS.	PAINT	CONCRETE SHALL HAVE PLAN-RESISTANT SURF ON ALL DECKS

NOTE: ALL VENISER PLASTER CALLED FOR ON THIS SCHEDULE TO HAVE SAND FINISH.

REVISIONS	DATE	BY	PROJECT NO. CH KY1171D
1			
2			
3			
4			
5			
6			
7			
8			
9			

NORTHERN KENTUCKY UNIVERSITY HOUSING

AT RISK DATE: FEB. 5, 1972

COMMONS 2 PLAN, ELEM. - DETAILS

DRAWN BY: COMMONWEALTH OF KENTUCKY BUREAU OF FACILITIES MANAGEMENT

CHECKED BY: FRANKFORT, KENTUCKY

A/E FIRM NO: FISK-RINEHART-KELTCH-MEYER-INC. ARCHITECTS

DATE: 10-20-70

CENTRAL ASSOC. ENGINEERS INC. MECHANICAL

AGENCY AUTHORIZED AGENT: APPROVED FOR PROGRAM CONCEPT ONLY

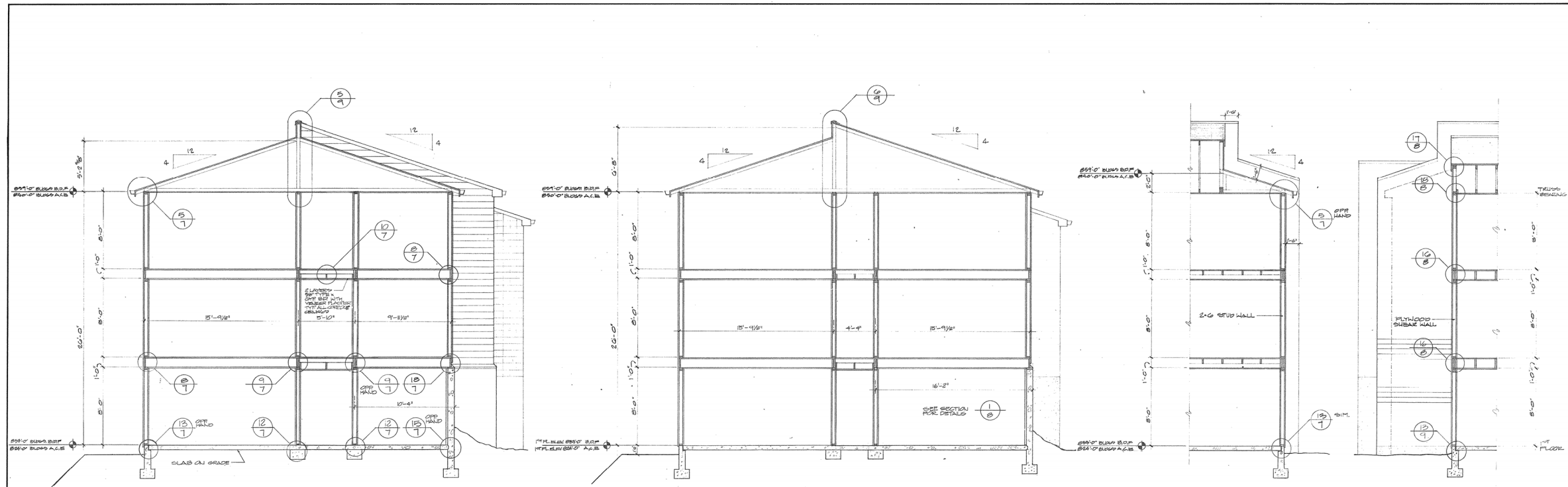
DIVISION OF ENGINEERING: APPROVED FOR PROGRAM CONCEPT ONLY

DATE: 7-27-72

DRAWING NO: 4

REVISIONS DIV OF ENGR. ENG. FILE NO.

L-1100



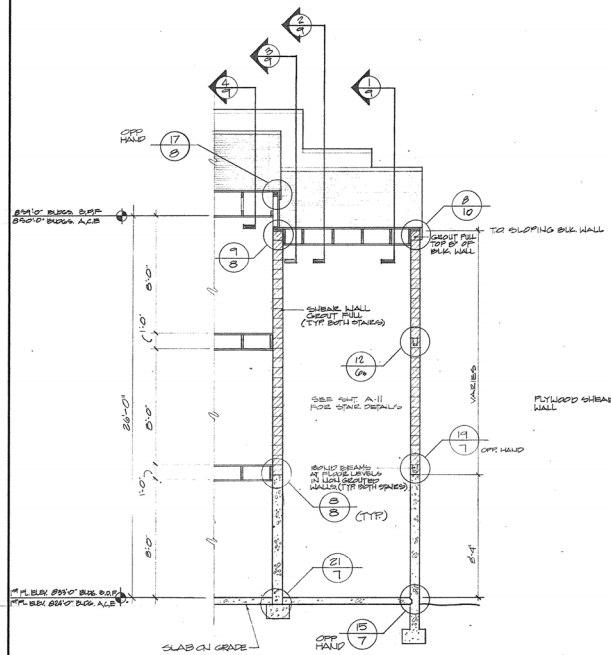
NOTE: FOR ROOFING DETAILS SEE SHEET 106

SECTION 1
1/2" = 1'-0"

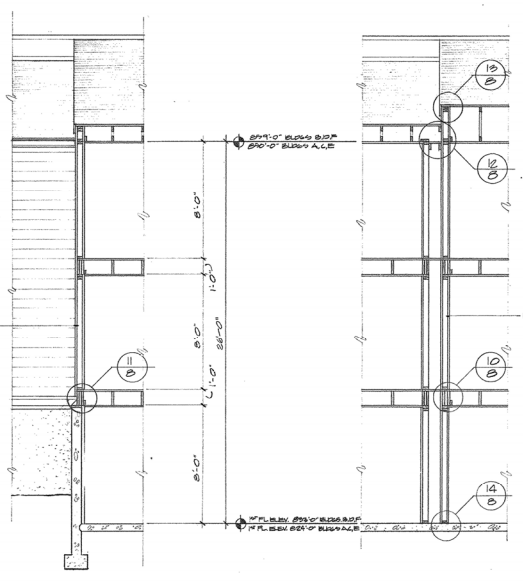
SECTION 2
1/4" = 1'-0"

SECTION 3
1/4" = 1'-0"

SECTION 4
SHEAR WALL 1/2" = 1'-0"

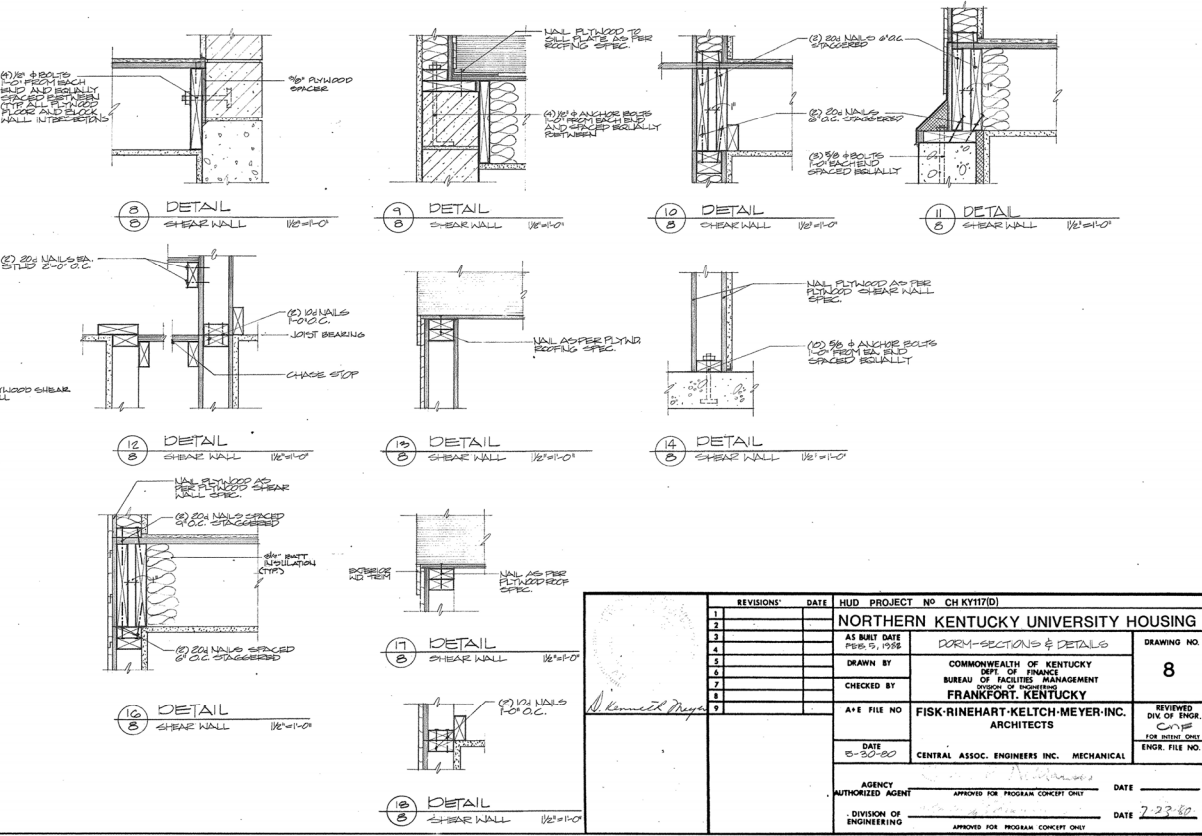


SECTION 5
SHEAR WALL 1/2" = 1'-0"



SECTION 6
SHEAR WALL 1/2" = 1'-0"

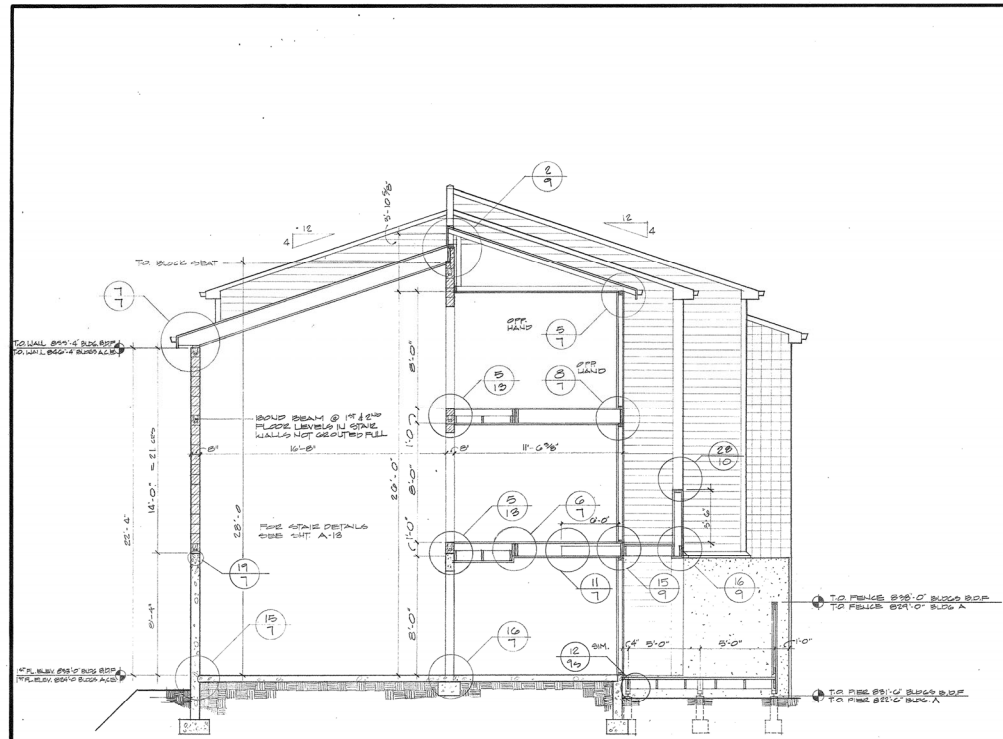
SECTION 7
SHEAR WALL 1/2" = 1'-0"



REVISIONS	DATE	HUD PROJECT NO. CH KY17(D)
1		NORTHERN KENTUCKY UNIVERSITY HOUSING
2		DORM-SECTIONS & DETAILS
3		COMMONWEALTH OF KENTUCKY
4		DEPT. OF FINANCE
5		BUREAU OF FACILITIES MANAGEMENT
6		FRANKFORT, KENTUCKY
7		FISK-RINEHART-KELTCH-MEYER-INC.
8		ARCHITECTS
9		CENTRAL ASSOC. ENGINEERS INC. MECHANICAL

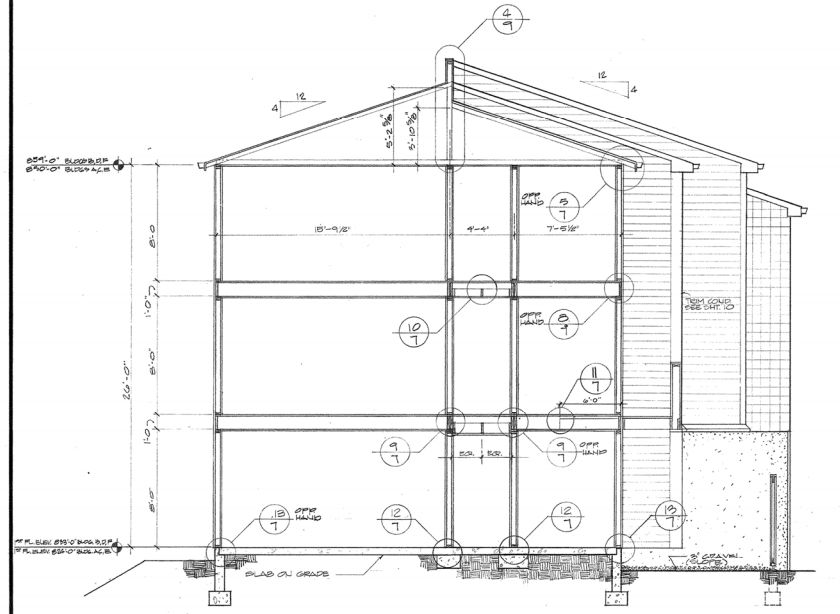
AS BUILT DATE	PERIOD	1996
DRAWN BY		
CHECKED BY		
A/E FILE NO.		
DATE		8-30-80
AGENCY AUTHORIZED AGENT	APPROVED FOR PROGRAM CONCEPT ONLY	DATE
DIVISION OF ENGINEERING	APPROVED FOR PROGRAM CONCEPT ONLY	DATE

I-1106

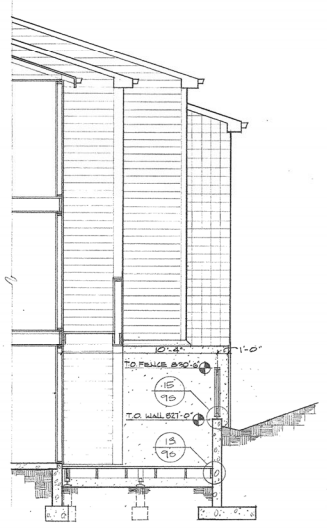


NOTE: FOR ROOFING DETAILS SEE SHEET 96

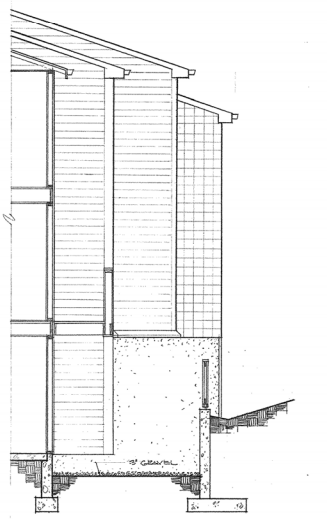
SECTION 1/2" = 1'-0"
CORRIDOR BLDGS. A, B, D, F



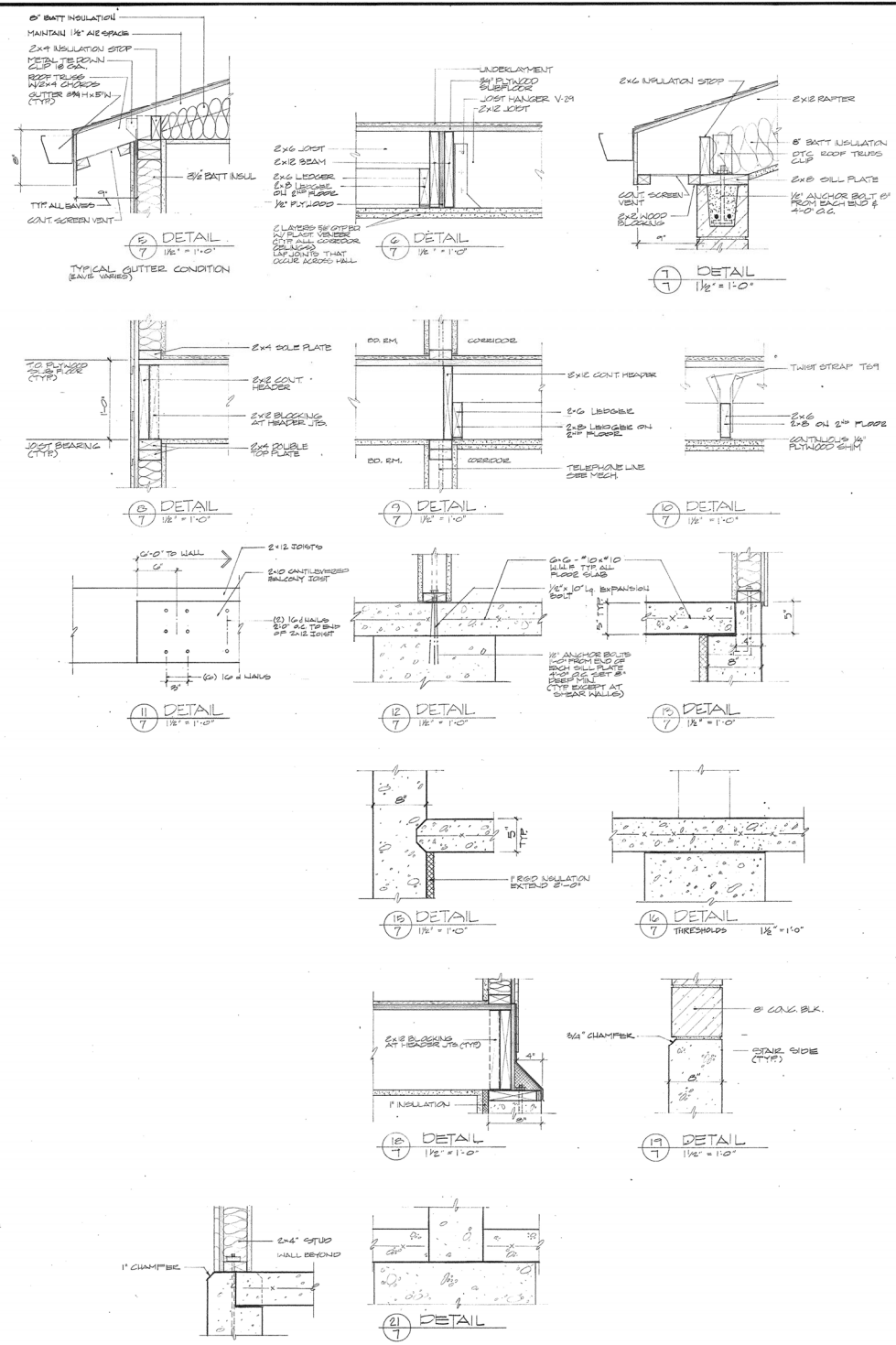
SECTION 1/2" = 1'-0"
CORRIDOR BLDGS. A, B, D, F



SECTION 1/2" = 1'-0"
CORRIDOR BLDGS. C & E



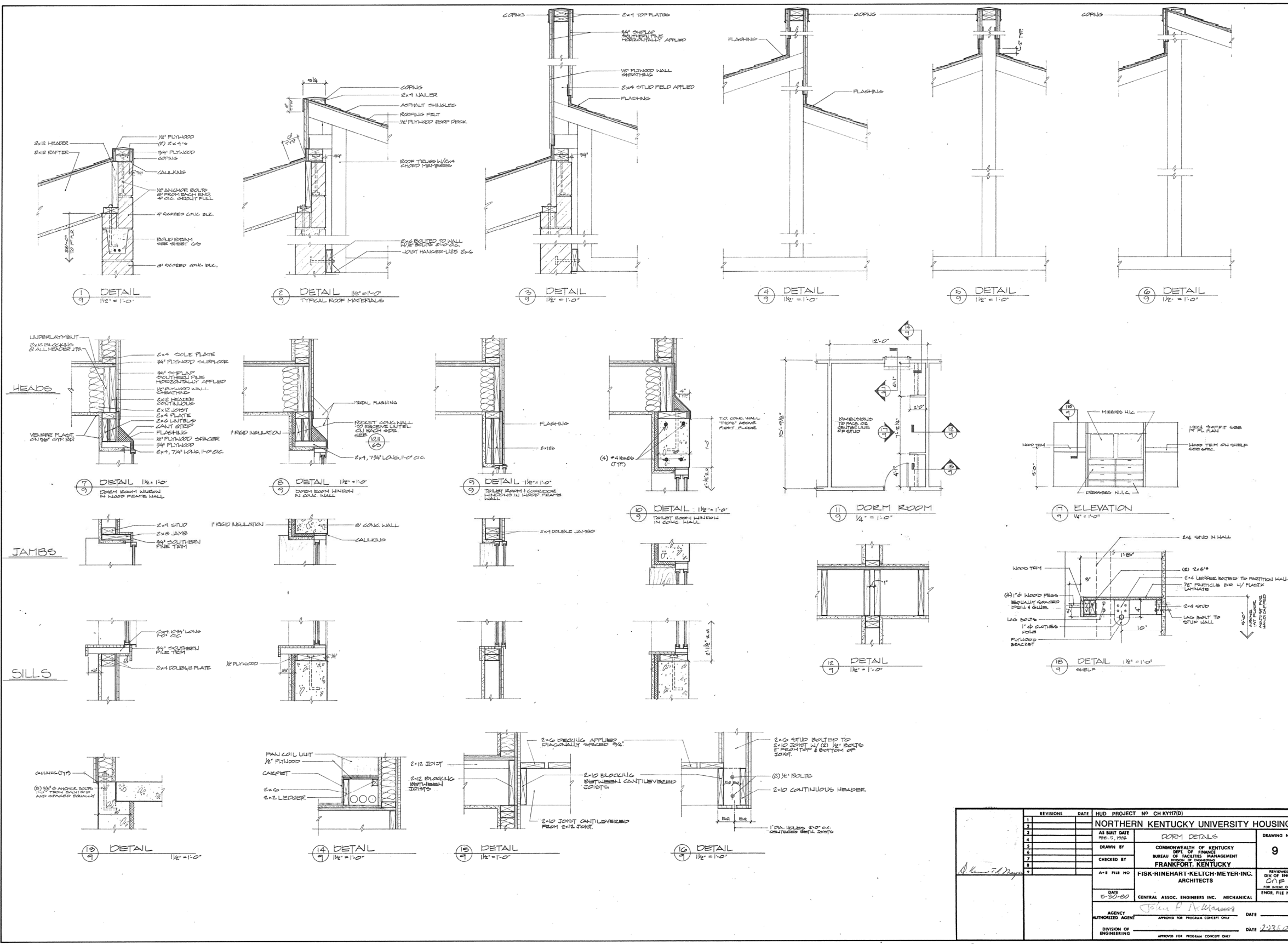
SECTION 1/2" = 1'-0"
CORRIDOR BLDGS. C & E



REVISIONS	DATE	HUD PROJECT NO. CH KY17(D)
1		
2		
3		
4		
5		
6		
7		
8		
9		

NORTHERN KENTUCKY UNIVERSITY HOUSING		
AS BUILT DATE	ROOMS - SECTIONS & DETAILS	DRAWING NO.
DRAWN BY	COMMONWEALTH OF KENTUCKY	7
CHECKED BY	DEPT. OF FINANCE	
	BUREAU OF FACILITIES MANAGEMENT	
	FRANKFORT, KENTUCKY	
A+E FILE NO.	FISK-RINEHART-KELTCH-MEYER-INC.	REVIEWED
	ARCHITECTS	BY OF THIS
DATE	CENTRAL ASSOC. ENGINEERS INC. MECHANICAL	ENGR. FILE NO.
AGENCY AUTHORIZED AGENT	APPROVED FOR PROGRAM CONCEPT ONLY	DATE
		7-23-80
DIVISION OF ENGINEERING	APPROVED FOR PROGRAM CONCEPT ONLY	

6-1105



REVISIONS	DATE	HUD PROJECT NO CH KY17(D)	DRAWING NO.
1		NORTHERN KENTUCKY UNIVERSITY HOUSING	9
2		AS BUILT DATE FEB. 5, 1982	
3		DORM DETAILS	
4		DRAWN BY COMMONWEALTH OF KENTUCKY	
5		DEPT. OF FINANCE	
6		BUREAU OF FACILITIES MANAGEMENT	
7		FRANKFORT, KENTUCKY	
8		DATE 5-30-80	
9		A/E FILE NO. FISK-RINEHART-KELTCH-MEYER-INC. ARCHITECTS	REVISED DIV. OF ENGR. C/P FOR SOME ONLY ENGR. FILE NO.
		CENTRAL ASSOC. ENGINEERS INC. MECHANICAL	
		AGENCY AUTHORIZED AGENT APPROVED FOR PROGRAM CONCEPT ONLY	DATE 2-23-82
		DIVISION OF ENGINEERING APPROVED FOR PROGRAM CONCEPT ONLY	

F-1107