

OWNERSHIP OF INSTRUMENTS OF SERVICE: All data, notes and other documents and instruments prepared by the Consultant as indicated on drawings shall remain the property of the Consultant. The Consultant shall retain all common law, statutory and other reserved rights, including, without limitation, the copyright therein.

5/7/2021 6:33:20 PM \\Users\khustondocuments\Revit\22683.00-21-Electric-Northern Kentucky University Lucas Admin Bldg Switchgear Replacement_khuston.rvt

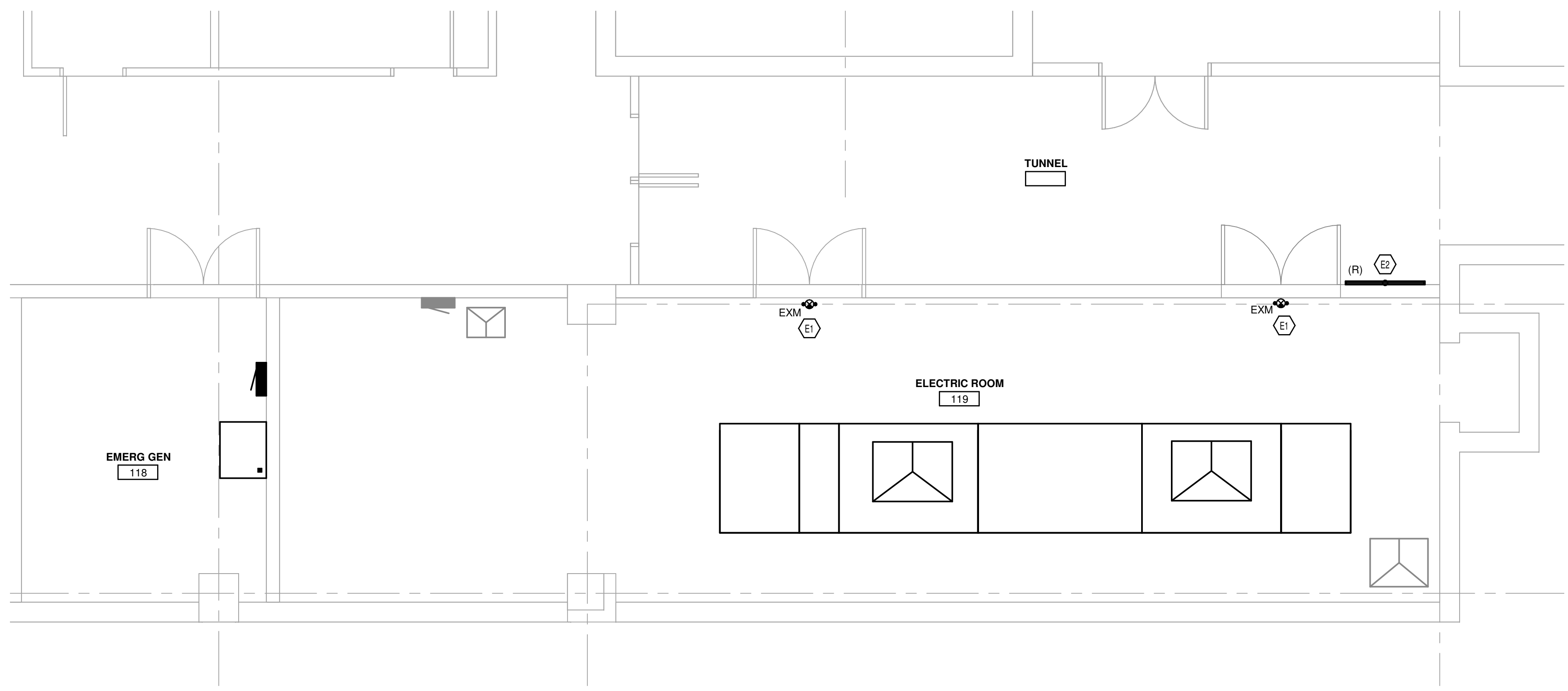
ELECTRIC LUMINAIRE SCHEDULE

GENERAL NOTES:
 A. REFER TO DRAWINGS FOR MOUNTING TYPE, NUMBER OF FACES AND ARROWS OF EXIT SIGNS. VERIFY IN FIELD PRIOR TO INSTALLATION.
 B. VERIFY COMPATIBILITY WITH VOLTAGE, CONTROLS, ETC. FOR ALL LUMINAIRE COMPONENTS.
 C. COORDINATE EACH LUMINAIRE LOCATION WITH THE ARCHITECTURAL REFLECTED CEILING PLANS, CEILING INSTALLERS, ETC. AND PROVIDE APPROPRIATE MOUNTING SYSTEM REQUIRED FOR EACH LUMINAIRE. ALSO, PROVIDE PLASTER FRAMES, WALL BRACKETS, SUPPORTS, OR OTHER APPURTENANCES AS REQUIRED FOR PROPER AND COMPLETE INSTALLATIONS.
 D. WEAR CLEAN WHITE COTTON GLOVES WHEN HANDLING EXPOSED REFLECTIVE LUMINAIRE SURFACES. REMOVE PLASTIC SHIPPING BAGS ONLY AFTER INTERIOR WORK IS COMPLETE, AND CLEAN ALL SURFACES WITH CLEAN DRY CHEESECLOTH.
 E. MOUNTING HEIGHTS INDICATED ARE TO THE BOTTOM OF THE LUMINAIRE, UNLESS OTHERWISE NOTED.
 F. PRODUCTS: PROVIDE PRODUCTS INDICATED ON DRAWINGS AND SCHEDULES. WHERE MULTIPLE MANUFACTURER SERIES/MODEL NUMBERS ARE LISTED FOR A SINGLE LUMINAIRE, PROVIDE ONE OF THOSE LISTED. WHERE A SPECIFIC MANUFACTURER SERIES/MODEL NUMBER IS LISTED AS BASIS-OF-DESIGN, AND WHERE IT IS STATED THAT EQUIVALENTS WILL BE CONSIDERED, ANY PROPOSED NON-LISTED LUMINAIRES ARE SUBJECT TO REVIEW BY DESIGN PROFESSIONAL(S). SUBMITTALS FOR WHICH SHALL BE FURNISHED AT LEAST 7(10) DAYS PRIOR TO BID DATE OR THEY WILL NOT BE CONSIDERED. THESE PRE-BID SUBMITTALS SHALL CLEARLY STATE EXACTLY WHAT IS BEING PROPOSED AND SHALL DEMONSTRATE COMPLIANT EQUIVALENCY. SIMILAR REQUESTS FOR PROPOSED SUBSTITUTIONS MAY BE MADE ONLY AFTER BIDS ARE RECEIVED, AND ONLY IF OWNER CHOOSES TO CONSIDER SUBSTITUTION REQUESTS. DESIGN PROFESSIONAL(S) AND OWNER RESERVE THE RIGHT TO REJECT ALL PRODUCTS THAT ARE NOT DEEMED TO BE FULLY EQUIVALENT TO THE BASIS-OF-DESIGN LISTING(S). SUBMIT ALL REQUESTS AND QUESTIONS THROUGH THE FORMALLY-ESTABLISHED BIDDING PROCESS, NOT DIRECTLY TO ENGINEER.

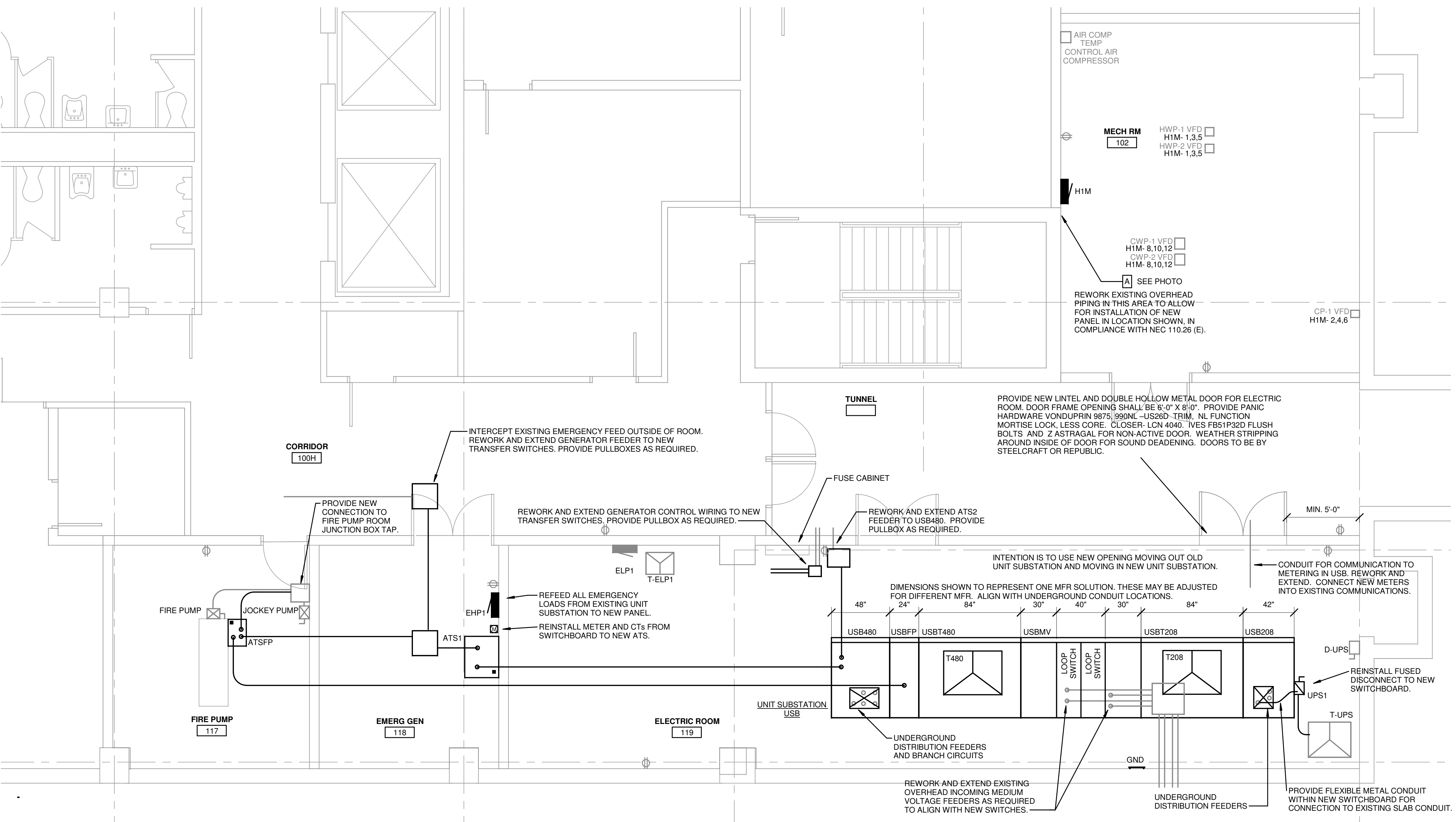
TYPE	DESCRIPTION	MANUFACTURER / SERIES	SIZE	HOUSING / MOUNTING	MATERIAL	LENS DESCRIPTION	LAMP QTY	LAMP TYPE	LAMP BASE	BALLAST / DRIVER QTY	BALLAST / DRIVER	FINISH	COMMENTS	FIXTURE LOAD	VOLTAGE
EXM	EXIT EMERGENCY LIGHTING UNIT COMBO	LITHONIA LHM LED CHLORIDE CLC DUAL-LITE EVC SUPRELITES APC7	21"x10 7/8"	UNIVERSAL	THERMOPLASTIC	STENGL FACE	2	1.5W LED WITH UNIT	9	NO BALLAST	NO BALLAST	WHITE	EXIT SIGNAGE COLOR TO BE BASED ON OWNER PREFERENCE OR EXISTING CONDITIONS. 8V UNIT, 3W OUTPUT LEAD CALCIUM BATTERY OPERATION, MULTI-VOLTAGE INPUT CAPABILITY	3 VA	120 V

KEYED NOTES

- E1 CONNECT NEW EMERGENCY EXIT SIGN TO LOCAL LIGHTING CIRCUIT.
- E2 RELOCATE EXISTING WALL-MOUNTED TUNNEL FIXTURE WITH MOUNTING HEIGHT OF 8'-6" AFF TO BOTTOM OF FIXTURE, AS REQUIRED TO COORDINATE WITH NEW ELECTRIC ROOM DOOR.



2 ELECTRIC LIGHTING PLAN - BASEMENT
1/4" = 1'-0"

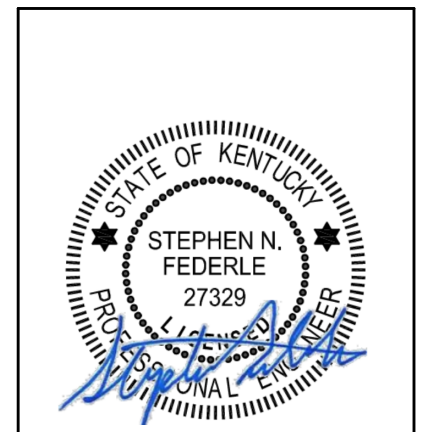


1 ELECTRIC POWER PLAN - BASEMENT
1/4" = 1'-0"

MECHANICAL/ELECTRICAL ENGINEERS
 WWW.KLHENGINEERS.COM
 LEWISTON, KENTUCKY
 LOUISVILLE, KENTUCKY
 NEW YORK, NEW YORK

KLH ENGINEERS
 KOHRS LOHMEYER HEEL ENGINEERS, INC.
 158 ALEXANDRIA PIKE, SUITE 11
 FT. THOMAS, KENTUCKY 41075
 859-446-4600
 859-446-8958 FAX

LUCAS ADMINISTRATIVE CENTER
ELECTRIC DISTRIBUTION UPGRADE
 HIGHLAND HEIGHTS, KY 41076
 NORTHERN KENTUCKY UNIVERSITY



NO.	REVISIONS

DWN: KAH CHK: SNF
 DATE: 05/07/2021
 PROJECT #: 22683

ELECTRIC POWER AND LIGHTING PLANS - BASEMENT

E-102

1" REFERENCE
 KLH PROJECT # 22683