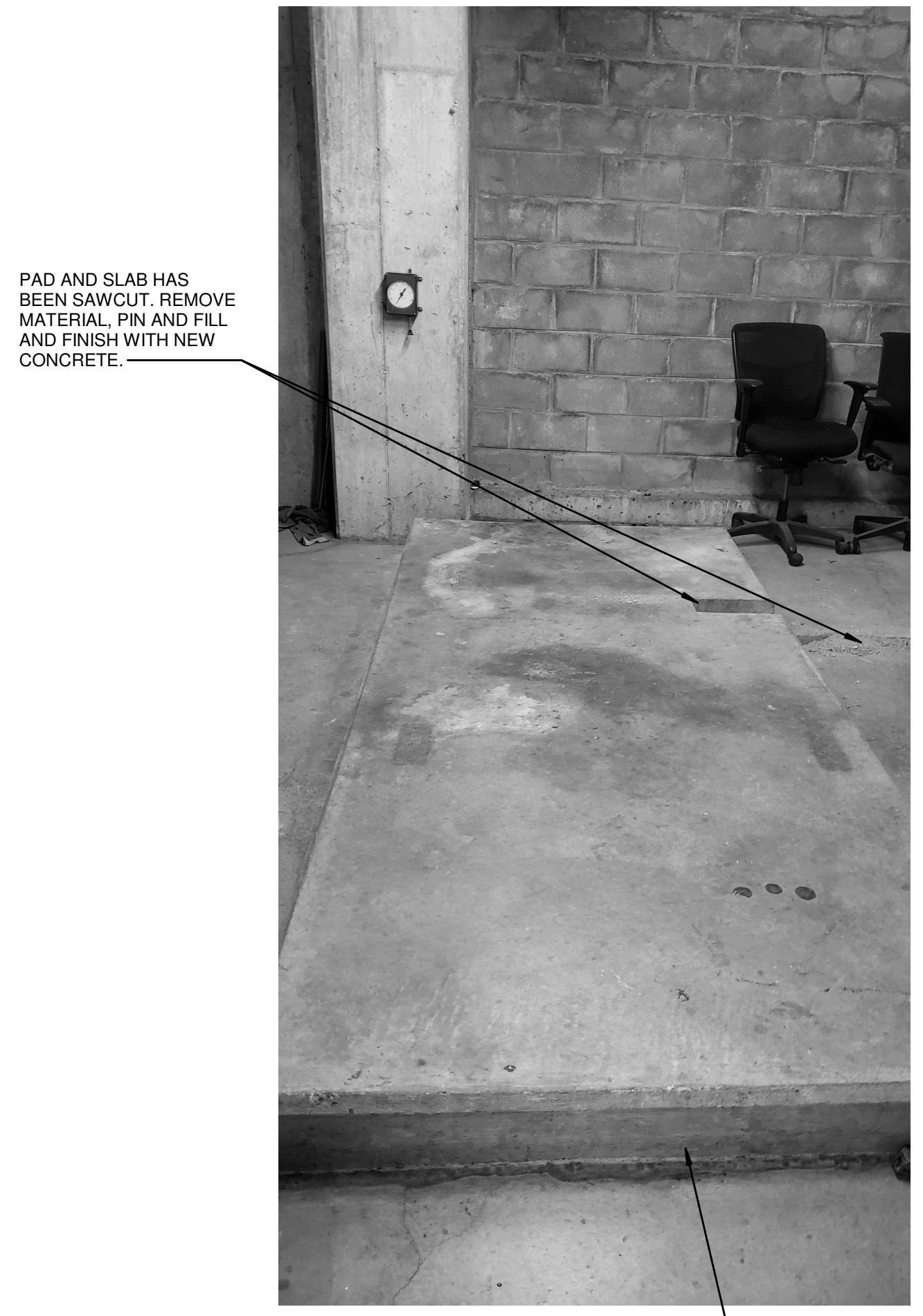


OWNERSHIP OF INSTRUMENTS OF SERVICE: All data, notes and other documents and instruments prepared by the Consultant as instruments of service shall remain the property of the Consultant. The Consultant shall retain all common law, statutory and other reserved rights, including, without limitation, the copyright therein.

5/7/2021 6:33:19 PM C:\Users\khuston\Documents\Revit\22683_00-21-Electric-Northern Kentucky University Lucas Admin Bldg Switchgear Replacement_khuston.rvt



A SLAB POURED ON TOP OF FLOOR SLAB.

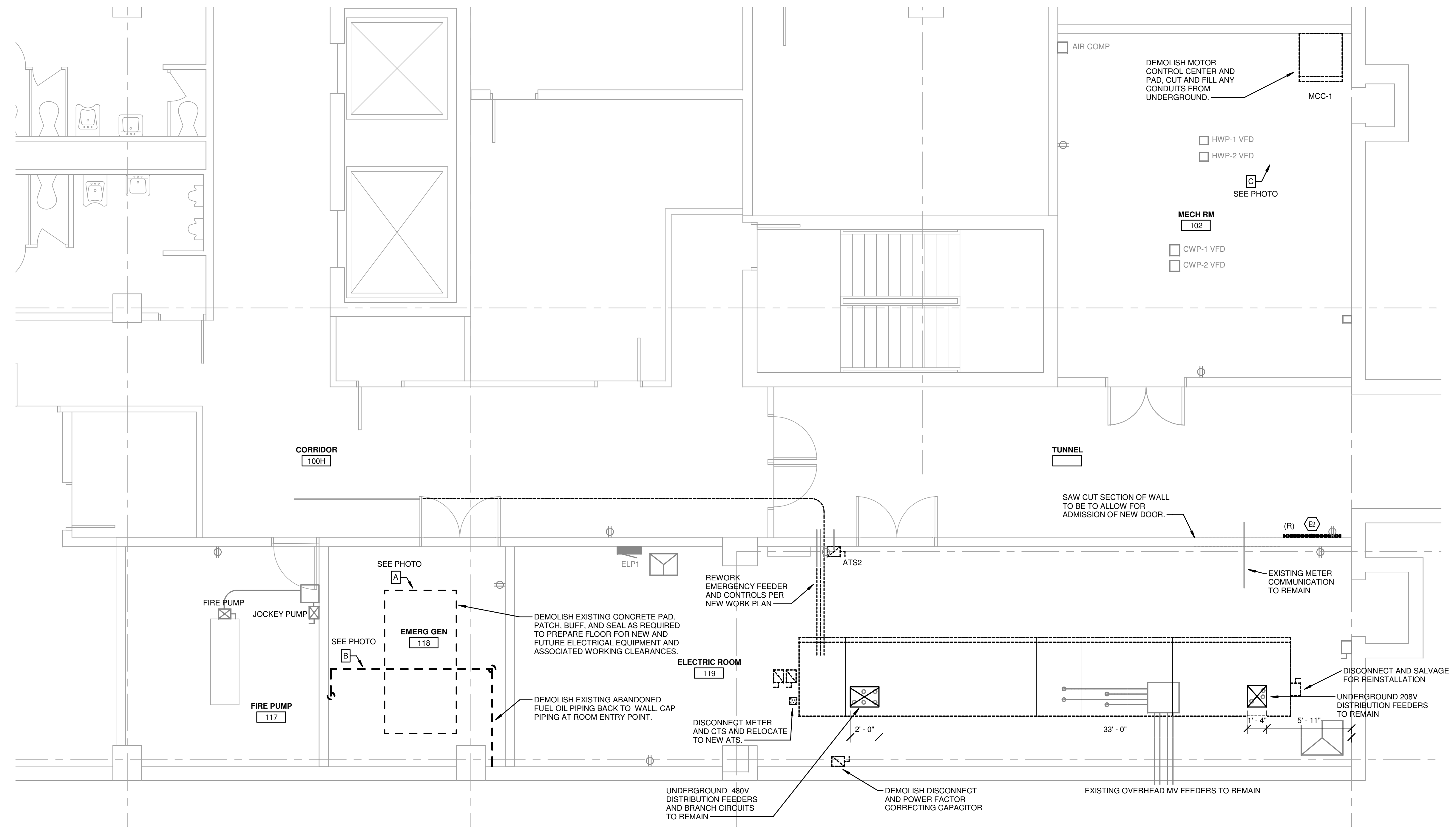


B



C

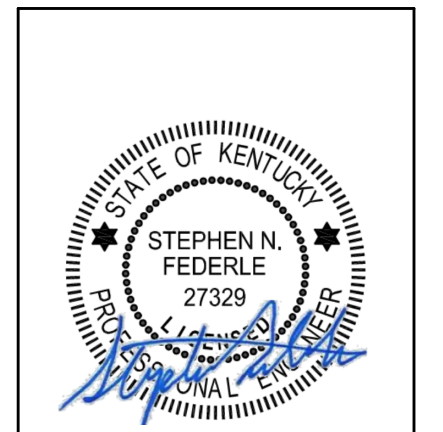
KEYED NOTES
 E2 RELOCATE EXISTING WALL-MOUNTED TUNNEL FIXTURE WITH MOUNTING HEIGHT OF 9'-6" AFF TO BOTTOM OF FIXTURE, AS REQUIRED TO COORDINATE WITH NEW ELECTRIC ROOM DOOR.



1 ELECTRIC DEMOLITION PLAN - BASEMENT
 1/4" = 1'-0"

MECHANICAL ELECTRICAL ENGINEERS
 WWW.KLHENGINEERS.COM
KLH ENGINEERS
 KOHRS LONNEMANN HELL ENGINEERS, INC.
 1538 ALEXANDRIA PIKE, SUITE 111
 LEWISTON, KENTUCKY 40358
 FT. THOMAS, KENTUCKY 41075
 852-446-8558 FAX

LUCAS ADMINISTRATIVE CENTER
ELECTRIC DISTRIBUTION UPGRADE
 HIGHLAND HEIGHTS, KY 41076
 NORTHERN KENTUCKY UNIVERSITY



REVISIONS

NO.	DESCRIPTION

DWN: KAH CHK: SNF
 DATE: 05/07/2021
 PROJECT #: 22683

ELECTRIC DEMOLITION PLAN - BASEMENT

E-101
 1" REFERENCE
 KLH PROJECT # 22683